

# NEW MEXICO'S HIGHWAYS

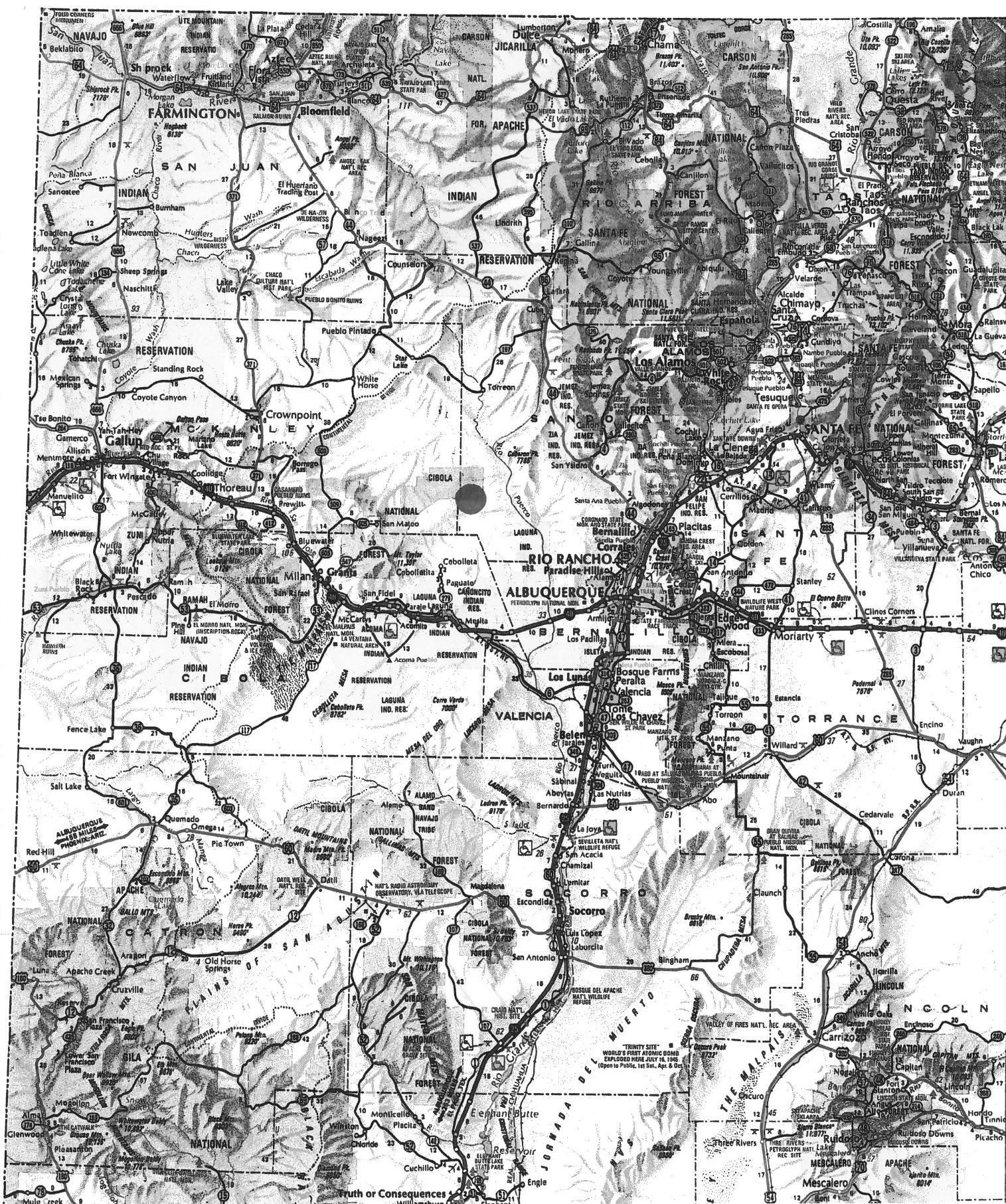
1

2

3

4

5



## L-Bar Ranch

### Introduction

The L-Bar Ranch is located in West Central New Mexico in Sandoval and McKinley Counties. It consists of approximately 61,947 deeded acres. It lies east and northeast Mt. Taylor (elevation 11,301 feet) within and adjacent to the Cibola National Forest and Marques Wildlife Park. The east boundary is only 40 air miles from downtown Albuquerque. Access is off Interstate 40 at Exit #114 (approximately 46 miles west of Albuquerque), then north 15 miles on Road 279. It is only about 1.5 hours driving time from Albuquerque International Airport in New Mexico's largest metropolitan city. Similar wildlife properties are 3.5 to 4 hours driving time from Albuquerque.

The Ranch ranges in elevation from 6300 to over 9000 feet. It is almost equally divided into the upper and lower ranges with a transition zone in between. Year-long precipitation averages between 12 inches in the lower country to well over 20 inches in the upper country. The growing season runs from April through October. The summer month of June is generally the hottest, with temperatures rising over 90° and cooling off at night to the mid to upper 50s. Average high rain fall months are July, August and September. Snowfall is generally from December to mid March. Snow generally melts off in one to three days in the lower country. Accumulations of snow may stay on the ground until April in the upper country, providing good spring runoff and recharge of the aquifer.

The lower country consists of approximately 33,204 acres ranging in elevation from 6300 to 6700 feet, with peaks and mesa tops reaching 7700 feet. This country slopes to the east and southeast, making it excellent livestock and wildlife winter range. It is characterized by large flood draws, rolling Piñon-Juniper hills, and mesas. An interesting topographic feature is the "volcanic plugs" rising up out of the valley floor several hundred feet. Numerous natural springs occur around these "volcanic plugs."

The ranch has excellent natural grass and browse cover, including but not limited to the following species: Blue Gramma, Sideoats Gramma, Sacaton, Galleta, Western Wheatgrass, Pinegrass, Arizona Fescue, Four-wing Saltbush, Winterfat, Alfilaria, Apache Plume, and Oak Brush. The owner is currently planting several areas with new and improved grasses.

## L-BAR Ranch

Page 2

The lower country is divided into several major pastures and traps. It has a very nice headquarters residence, a 50 X 120 metal shop building, and all-steel shipping pens. Fences are either new or in excellent condition.

The ranch is watered by wells, springs, earthen tanks, intermittent creeks, and a 1¼" pipeline water system. There are three stocked trout ponds that are spring fed.

Estimated carrying capacity on the L-Bar Ranch is 1200 animal units. Note: Carrying capacities can and do vary from year to year due to weather and management. Interested parties are encouraged to conduct their own analysis.

The upper country consists of approximately 60,000 acres of which 28,743 are deeded. It sits on a basaltic mesa rim ranging in elevation from 7000 to over 9000 feet. The terrain is mostly of a gentle, rolling savannah type, with intermediate stands of Gambel Oak, Ponderosa Pine, and Piñon Pine. The Cerros de Guadalupe Mountain Range extends through the north portion. It consists of the steeper slope country and heavier stands of Ponderosa Pine and Gambel Oak. Aspen is present in some of the canyons. Grasses, browse and forbs consist of Blue and Sideoats Gramma, Mountain Muhly, Arizona Fescue, June Grass, Western Wheat Grass, Galleta, Gooseberry, Gambel Oak, Grey Oak, Mountain Mahogany, Sedges, and Rushes.

Most of the soils are moderately deep to very deep clay, and shallow and moderately deep loamy soils. The soils are considered the most productive there are on the Mount Taylor Ranger District. The gently sloping terrain and good grass cover retard water runoff, providing beneficial groundwater supplies and recharging of the underground aquifers. There are numerous large natural lake bed areas providing excellent grazing and water retention. The upper range of the L-Bar Ranch provides some of the most productive grazing and wildlife habitat land found in southwest. The savannah-like terrain with oak-covered hills, pine-studded slopes, canyons, and lake beds make it one of the most scenic areas found anywhere.

The L-Bar Ranch provides habitat for a variety of wildlife species. A review of the literature shows that in the region 99 species of mammals and 311 species of birds have been identified. Important resident game species on the ranch are Mule Deer, Rocky Mountain Elk, Black Bear, Mountain Lion, Barbary Sheep, Gambel Quail, Morning Dove, and Wild Turkey. The single most important game species is the elk. The ranch is prime, year-round elk habitat. The upper and intermediate

## L-BAR Ranch

Page 3

country provides the spring, summer and fall range. The large, dense oak stands with their tall canopy provide excellent spring and summer feed as well as serving as protection and crucial calving grounds for the elk herds. The intermediate zone and lower country provide the critical and much-needed elk winter range.

The upper country has a hunting lodge and a two bedroom Line Cabin.

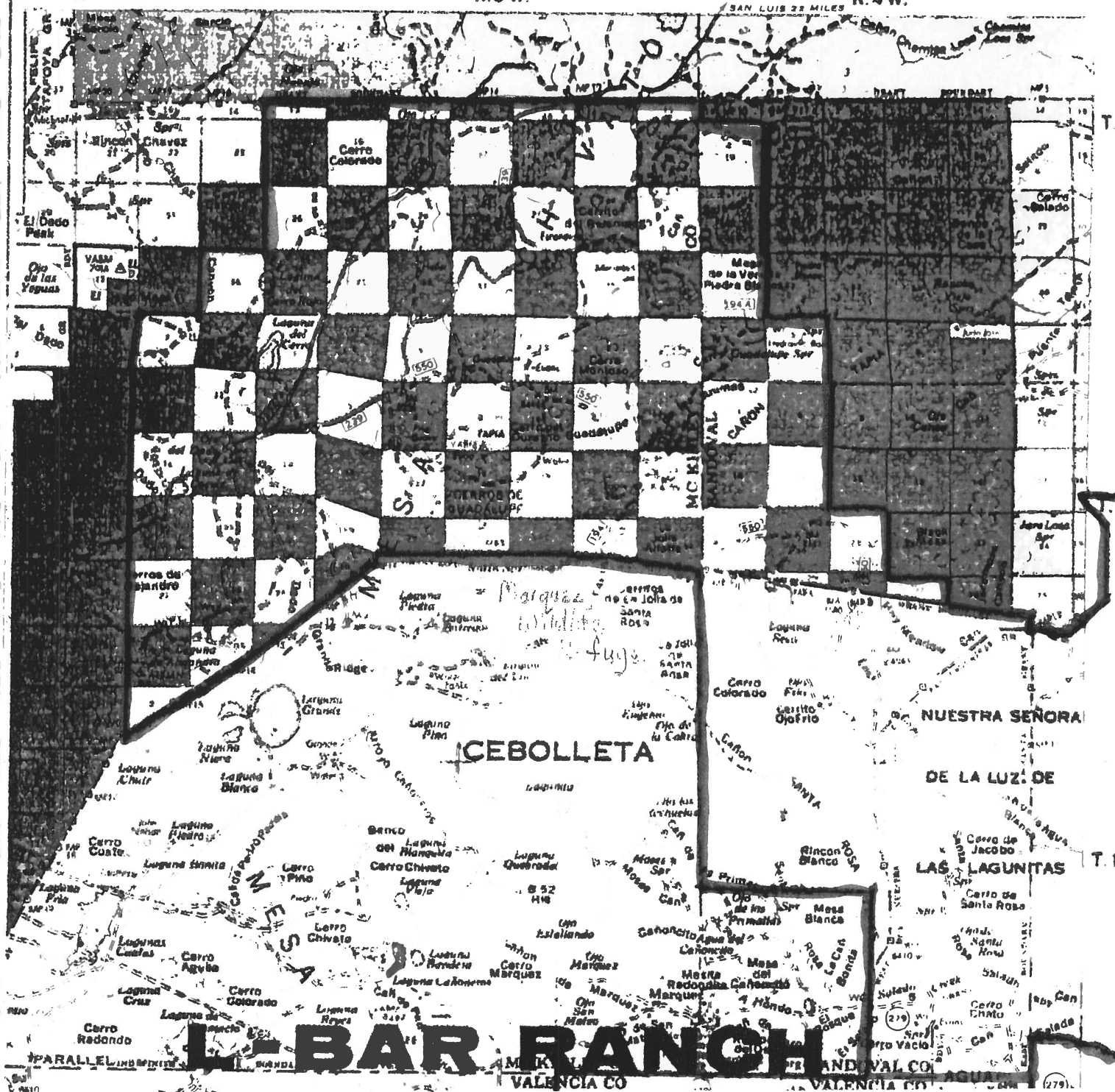
The L-Bar Ranch has attracted hunters from across the nation. It is rapidly becoming known for its trophy mounts.

Owner's Exclusive Agent:

Stromei Realty  
Tom Stromei, Broker  
P.O. Box 69  
Los Lunas, NM 87031  
(505) 865-9294  
(505) 552-6107  
(505) 552-9687 (fax)

The information provided herein was obtained from sources deemed to be reliable but is not guaranteed by the broker. The offer is subject to prior sale, price change, correction or withdrawal from the market. Tom Stromei Realty has the property listed and is representing the seller.

R. 4 W.





# L-BAR RANCH



Hunting Cabin



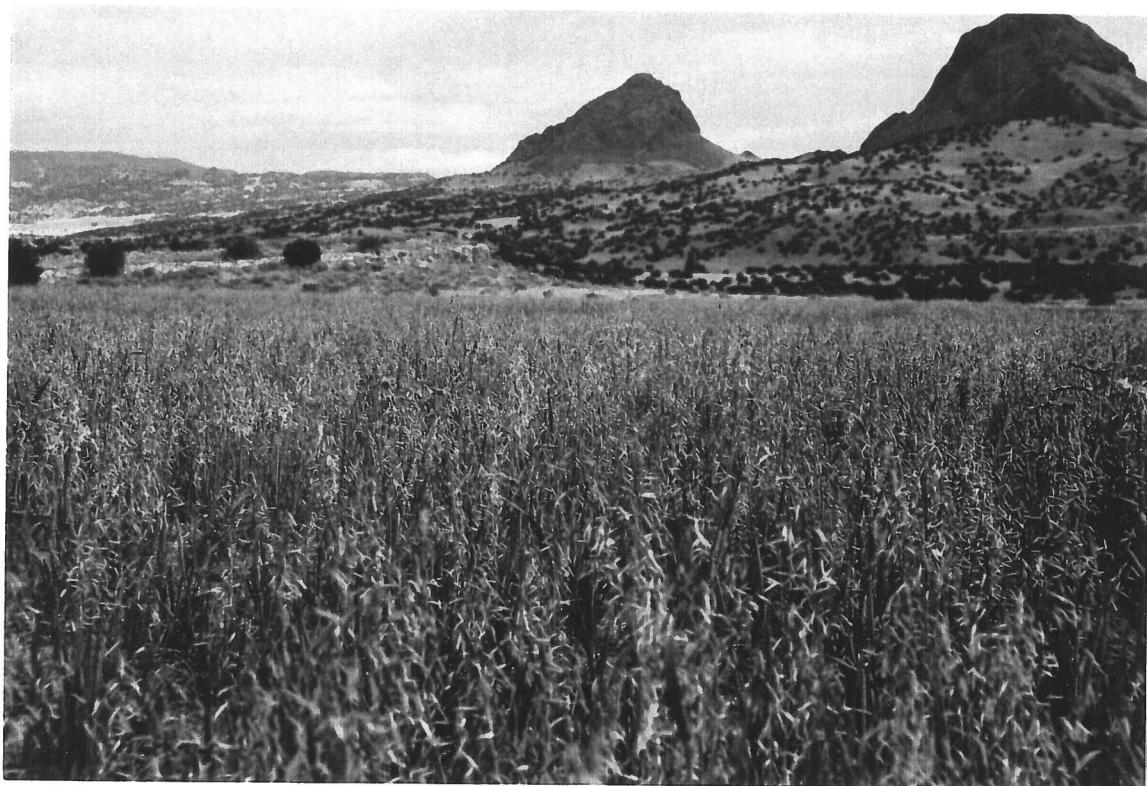
Headquarters

# L-BAR RANCH

*Lower Country*



TROUT LAKE



OAT PLANTING

# L-BAR RANCH



Lower Country

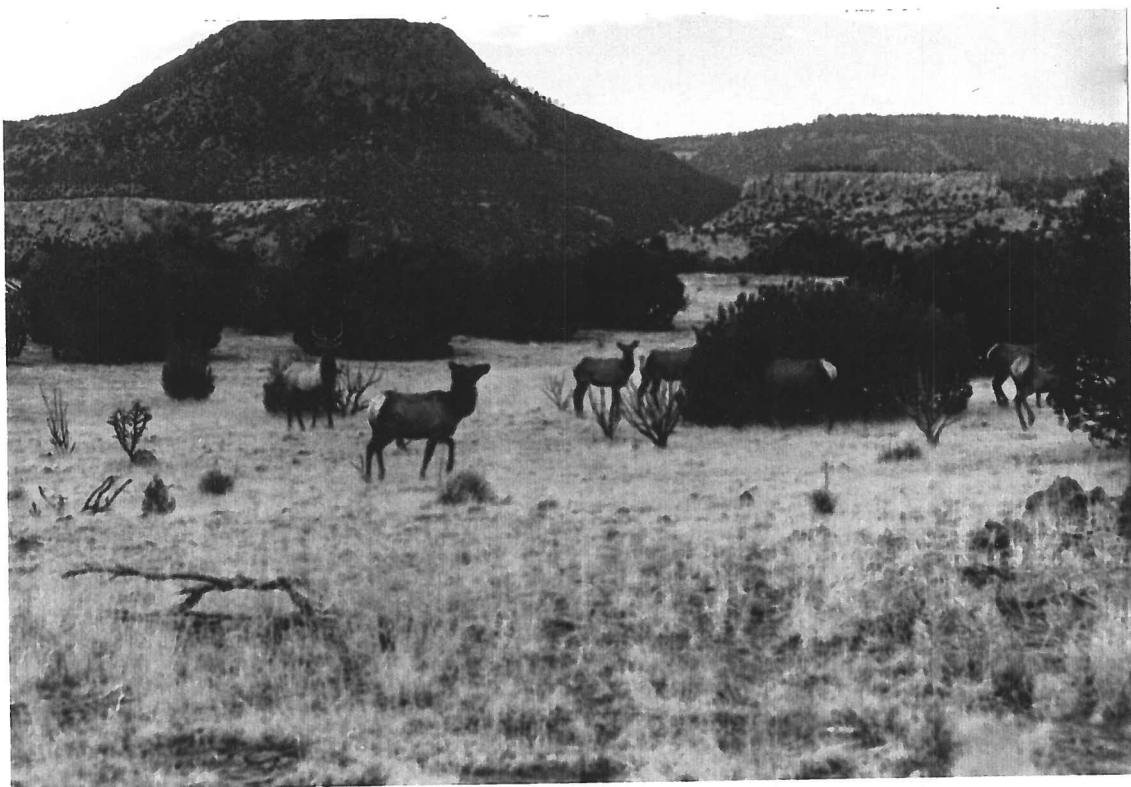
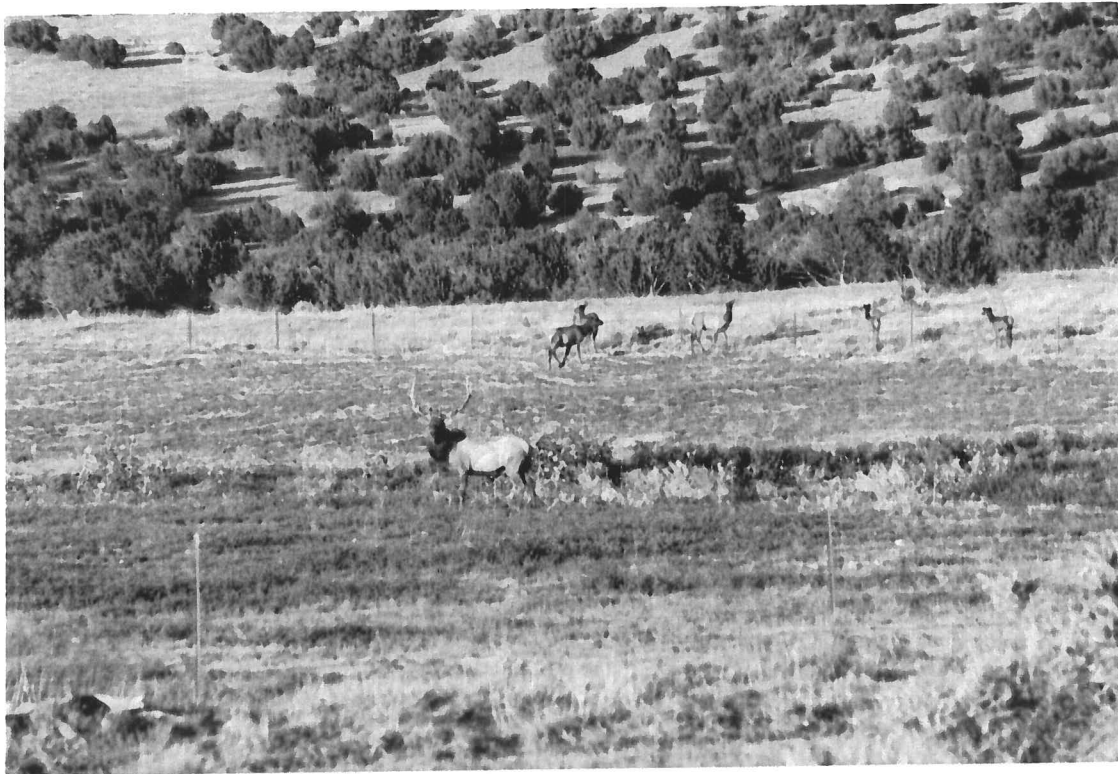




# L-BAR RANCH



# L-BAR RANCH



# L-BAR RANCH



ELK WINTER RANGE



Lower Country

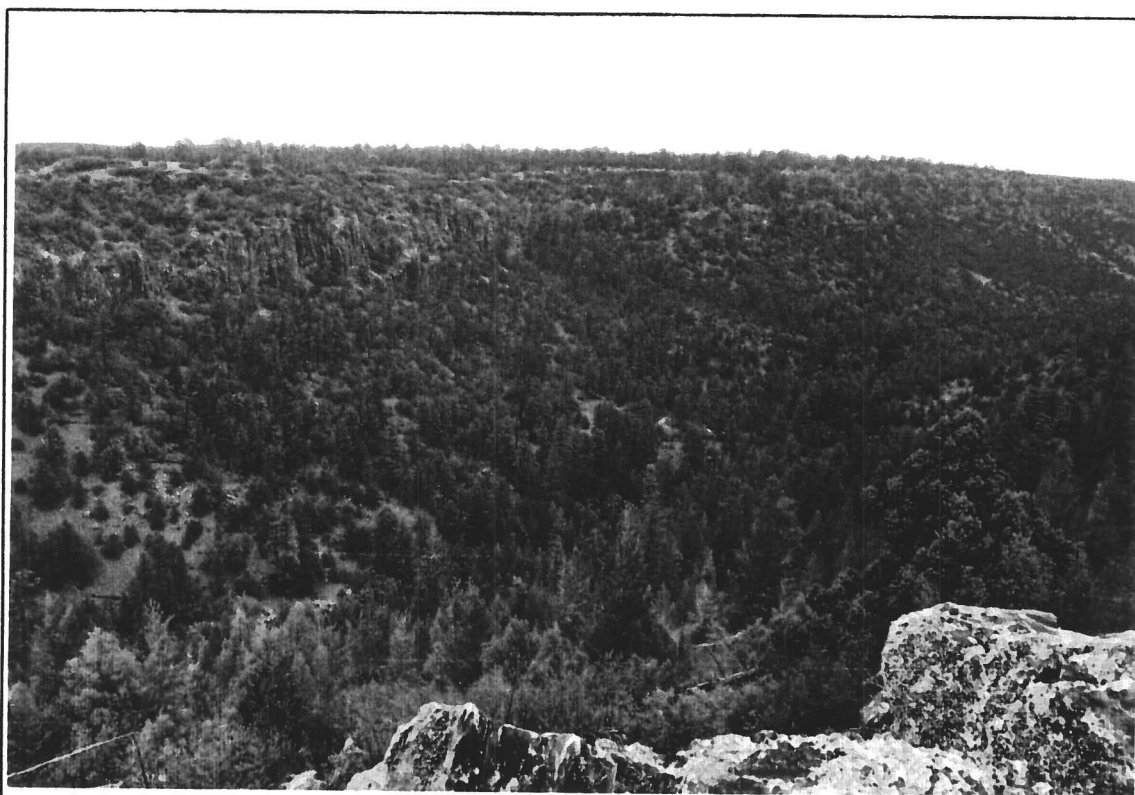


**Lionel Burns**

L Bar "Checkerboard"



Photograph of: Oakbrush Hillside - Mixed Ponderosa/Juniper Lower



Photograph of: Typical Canyon Bottom - Note Timber Stands

P  
H  
O  
T  
O  
G  
R  
A  
P  
H  
  
F  
O  
R

--





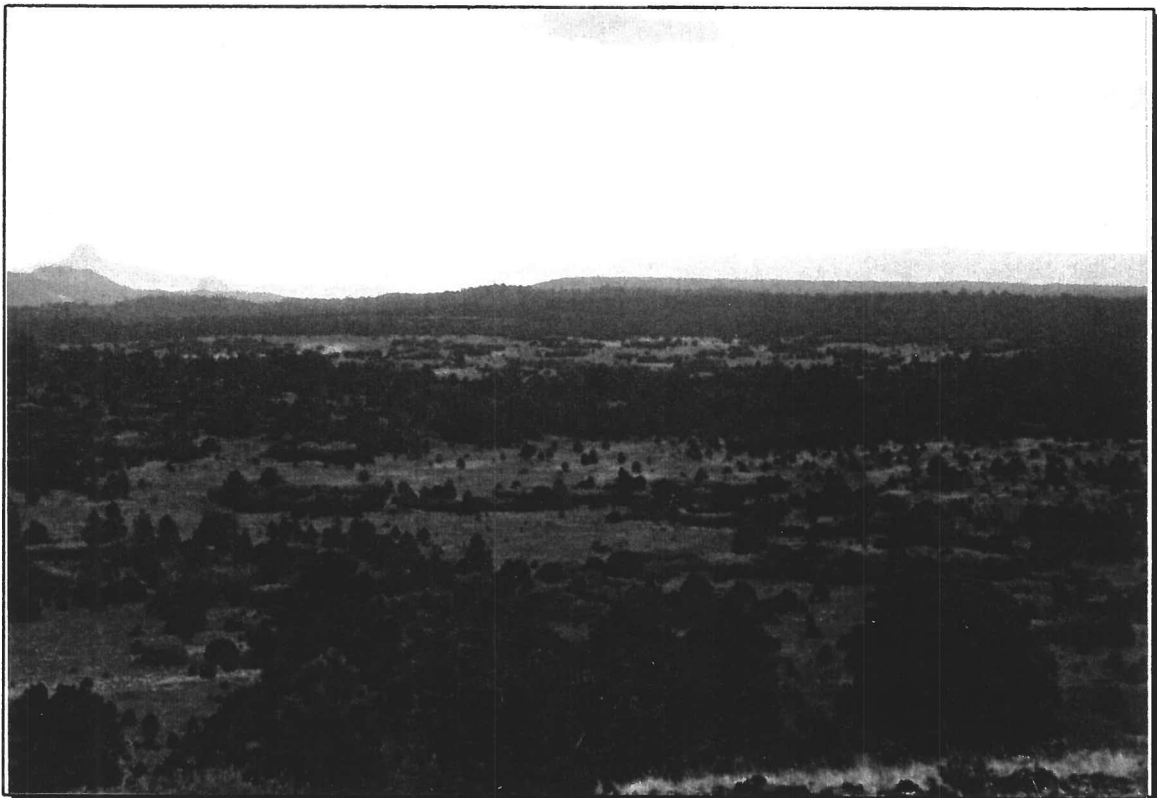
Lionel Burns

L Bar "Checkerboard"

P  
H  
O  
T  
O  
G  
R  
A  
P  
H  
  
F  
O  
R  
  
..



Photograph of: Roaming Antelope



Photograph of: View N.W. Toward Cabazon Peak



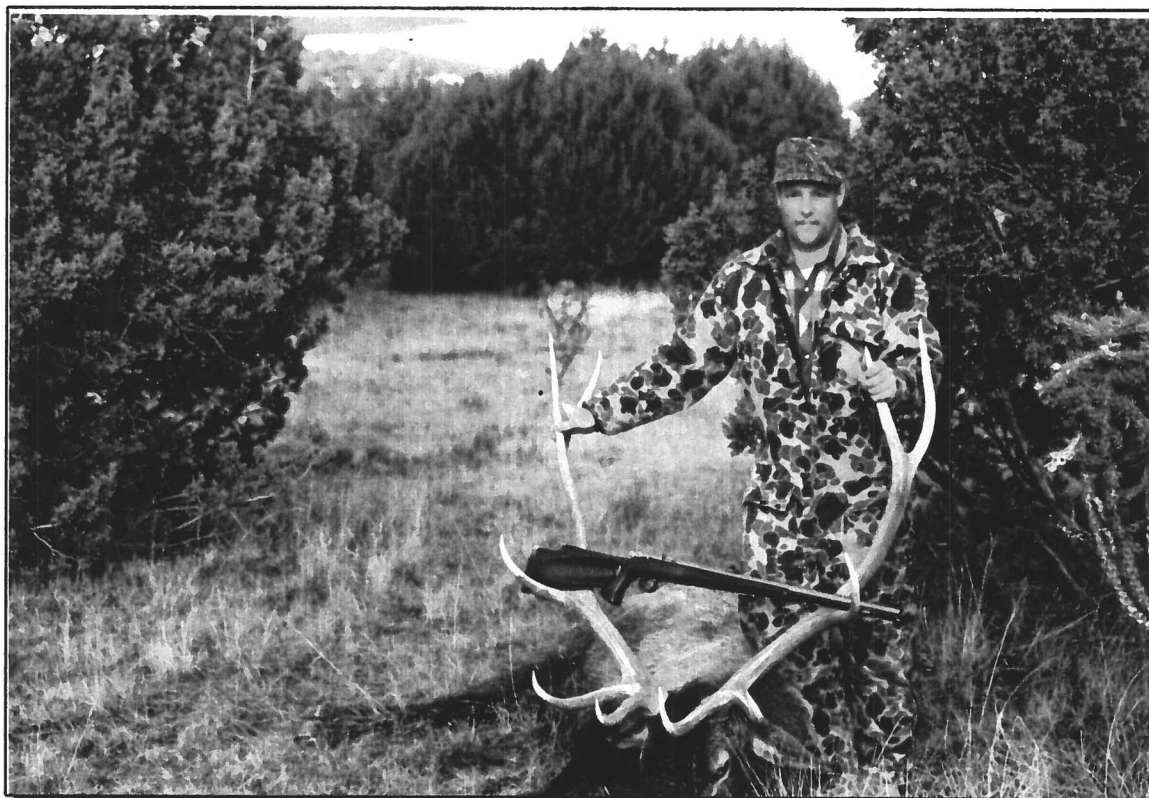
Lionel Burns

L Bar "Checkerboard"

P  
H  
O  
T  
O  
G  
R  
A  
P  
H  
  
F  
O  
R



Photograph of: Harvested Archery Elk



Photograph of: Harvested Bull Elk

--



Lionel Burns

L Bar "Checkerboard"



Photograph of: 6x8 Bull Elk Harvested 1996



Photograph of: Harvested Archery Elk

P  
H  
O  
T  
O  
G  
R  
A  
P  
H  
  
F  
O  
R



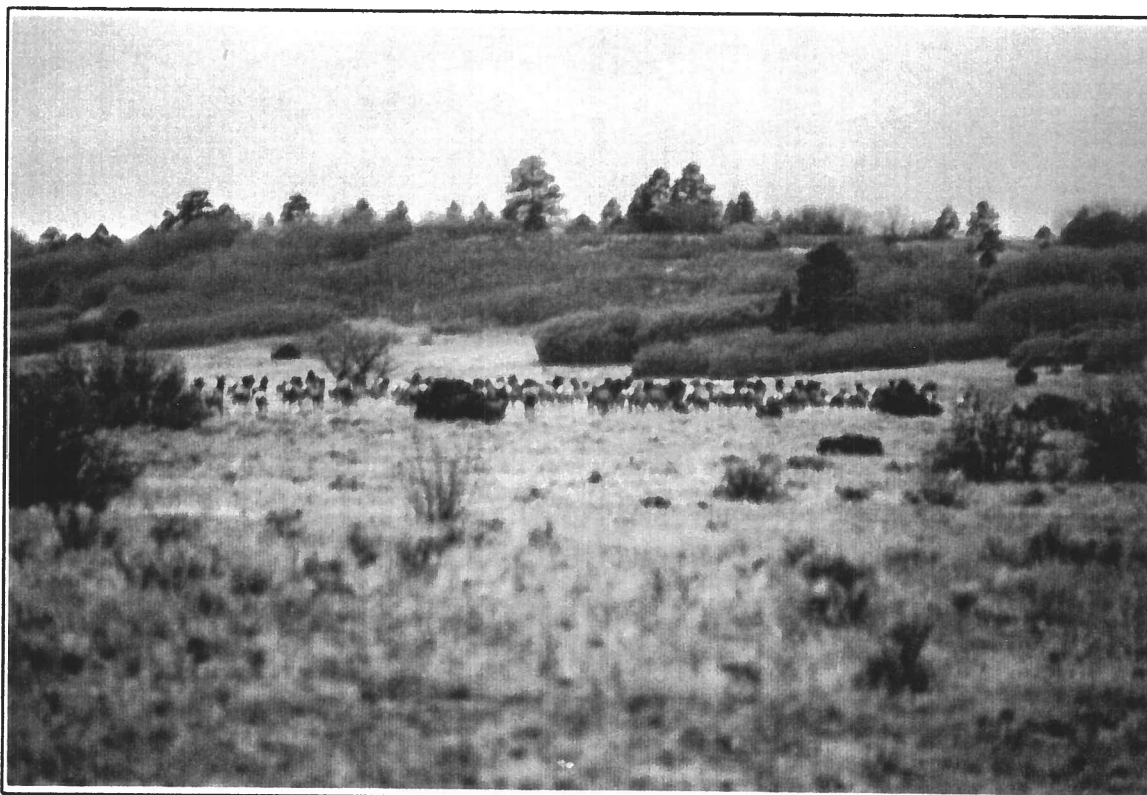
Lionel Burns

L Bar "Checkerboard"

P  
H  
O  
T  
O  
G  
R  
A  
P  
H  
  
F  
O  
R



Photograph of: Barbary Sheep



Photograph of: Wintering Elk Herd





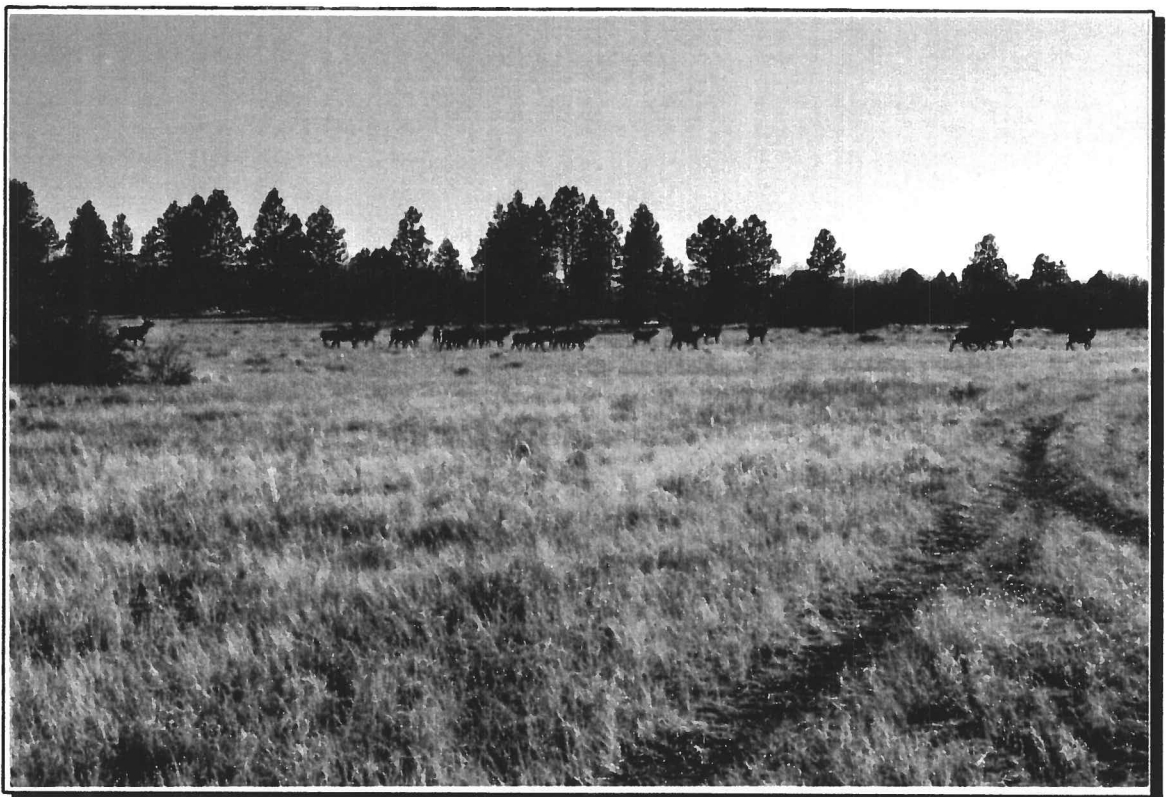
P  
H  
O  
T  
O  
G  
R  
A  
P  
H  
  
F  
O  
R

Lionel Burns

L Bar "Checkerboard"



Photograph of: Typical Bull Elk at Waterhole



Photograph of: Roaming Elk Herd



Lionel Burns

L Bar "Checkerboard"



Photograph of: Boone & Crockett Black Bear



Photograph of: Mule Deer

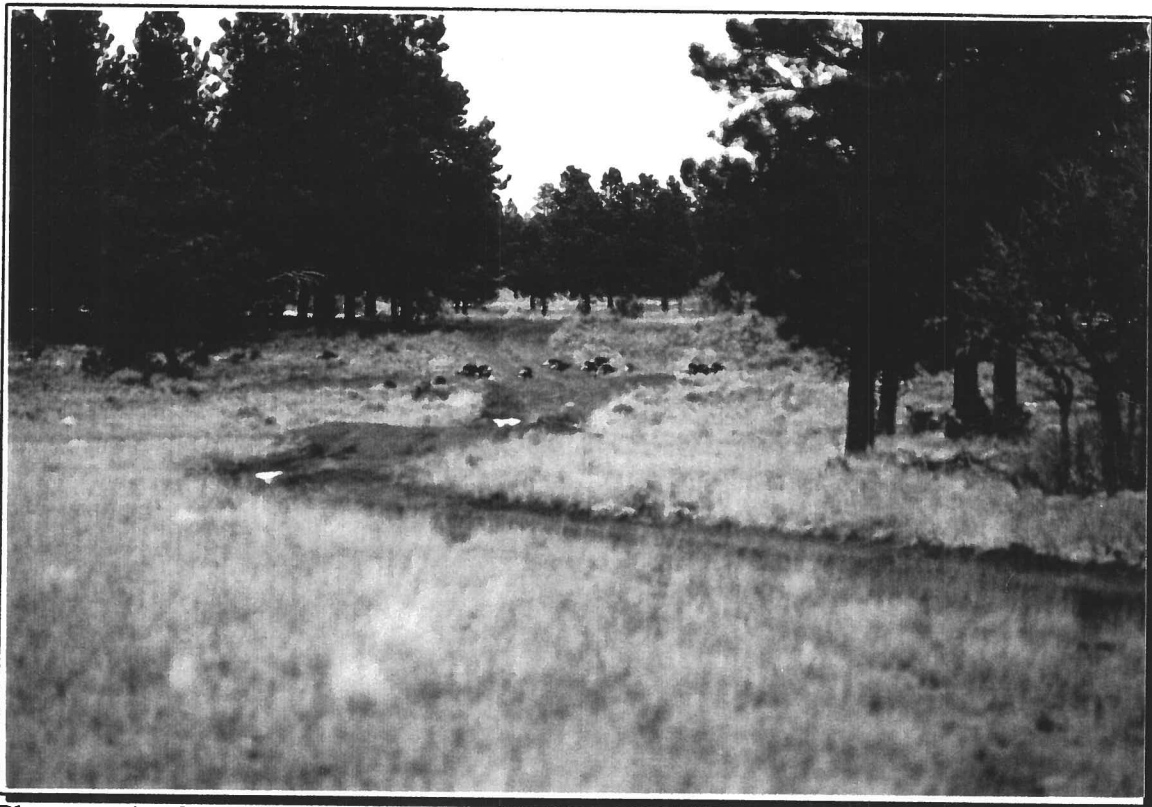
P  
H  
O  
T  
O  
G  
R  
A  
P  
H  
F  
O  
R



P  
H  
O  
T  
O  
G  
R  
A  
P  
H  
F  
O  
R

Lionel Burns

L Bar "Checkerboard"



Photograph of: Wild Turkey



Photograph of: Treed Black Bear