

MEMORANDUM

TO: Steve Frost, Coal Geologist, NMBMMR

FROM: H. B. Nickelson, Mining Geologist, Consultant, NMBMMR

SUBJECT: Reclamation evaluation for OSM, Gallup Field, Beacon Hill Mine,

Union Mine, Kennedy Mine, Atherton Mine, Southwestern Mine

* Atherton Mine 2900' NL, 750' EL, 21-15-18, Location 13 Gallup East

The area covered by the SE¼ of section 21, NE¼ of section 28, and inside the west line of section 27 will be discussed under title of the above mines as the workings were probably interconnected at some time during the 50 to 60 years of mining in this area.

The first mine was opened by the Los Angeles Coal Company about 1893 or 1894 and was named the Beacon Hill Mine. It was opened by a 500' slope and ventilated through a shaft. The coal was put on the railroad and shipped to Los Angeles. The mine apparently ceased operations in April, 1895. The writer believes the openings were located 1600' NL, 4800' EL, section 27. These openings are now sealed and only some dump material marks the locations.

The mine changed ownership and in November, 1899, was operated by the Union Coal Company. The mine name was then changed to the Union Mine. The coal was mined from the Black Diamond bed. The slope was extended to 1000' S. 70° W. on a dip of 14° to the west. A new air shaft was driven in 1900 and connected to the workings. At that time the coal was being hauled to the railroad by wagon. In 1901 and 1902 the company began a new slope (Location 83, 500' NL, 100' EL, section 28), and the mine was ventilated by a furnace.

In 1902-1903 the hoisting plant burned twice. It was not replaced the second time until November 10, 1904, when the mine was reopened. In 1905-1906 control of the property passed into the hands of the Gallup Fuel Company, William McVickers as General Manager. A new tram road and tipple connected to the railroad spur were built. The tram

Page 2 Atherton Mine

probably was built toward the south past the Crescent Mine and connected to the railroad spur leading to the Catalpa Mine. The Union Mine operated a short time during the fiscal year 1906-1907. In 1907-1908, John Kennedy obtained a lease, but he operated the mine only a short time. It was then known as the Kennedy Mine. The mine reopened on December 5, 1908, under the management of the Gallup-Southwestern Coal Company and was again called the Union Mine. In 1909-1910 the Mine Superintendent was Samuel Atherton.

In 1911 the entries squeezed and new openings were created (Location 13 in section 21). This new mine was called the Atherton Mine. It was opened by a double entry slope dipping 10° SW, double cross entries and dip planes turned off the cross entries, and rooms turned off the dip planes. Many openings to the surface took care of the ventilation. A new tipple and shaking screens were installed in 1915, and in 1916 a new office building and a new hoist engine were added as improvements. In 1917 water seeped into the workings and a pump was installed, and in the same year a fan was installed. In 1918 three mining machines were added underground. By 1921 the main slope was 3500' in length, and by 1925 the slope was 5200' in length and the dip had flattened to 5°. Coal was marketed through the Gallup American Coal Company's sales office. The mine operated until 1947. Operations under Gallup Southwestern Coal Company ceased and the mine was leased to Fiori Bomadiere in 1948; he subleased to Flavio Vigil, who removed the chain pillars in the entry system. In 1950 the mine was leased to the Landavozo Brothers, and operations ceased on April 30, 1953.

At some time during the ownership of the Gallup Southwestern Coal Company the mine name was changed to the Southwestern Mine. The ownership changed to the Gallup American Coal Company about 1947, and Gallup Gomerco Coal Company now owns 600 acres in section 21.

Page 3 Atherton Mine

Much of the mine was under section 28 to the south, and present ownership there is not known.

Production from the records until 1933 amounted to 1.257 million tons, and by taking tons produced per miner day I estimated 435,000 additional tons through 1945, a total of 1.642 million tons, which is probably conservative.

The examiners found only one opening on the property that needs to be reclaimed, Location 13a. All the other openings previously described either are sealed or present no hazard.

The Beacon Hill Mine, location 1600' NL, 4800' EL, section 27, was opened by a slope and ventilated through a shaft. The only evidence which now remains is the location of the shale and coal from the dump. No reclamation is needed. The site of the Union Mine (Location 83), is now an L-shaped depression about 8' deep with one limb 30' in length and the other limb about 50' in length. An old steel cable leads from the caved openings. This depression presents no danger as it is accessible.

At Location 13b and the cross on the map a few hundred feet to the south are air courses from the Union or the Atherton Mine. At 13b the opening has been bulldozed shut. The other opening, about 300' north of Location 83, is also sealed. The two openings at the Atherton Mine at Location 13 are both sealed.

The openings are both difficult to locate except for the tram road leading to each opening. The tram bears S. 22° W. Old hoist foundations are visible.

*

The opening at 13a is a slope open for about 70'. The opening is 6' across and 3' high and needs to be backfilled. The slope bears S. 70° W.

Photos taken over the mine area are as follows:

G-20-5 A view looking east across the valley showing the mine dumps of the Atherton-Southwestern Mine.

Page 4 Atherton Mine

G-20-9 View of the dump area looking north. The first dump in the foreground leads south to the two slopes. The slopes are barely discernible and are both well sealed. No photos were taken of the openings.

G-20-10 A view taken from the top of the tram road. Both slope openings are at about the same location; Karl is at one opening and the range pole is at the other. The portals are well sealed.

* G-20-11 This view shows the open portal of a slope that is open for about 70'. The portal slope bears S. 70° W. The opening should be backfilled as considerable bike traffic takes place over the area and a school is located on the ridge to the east.

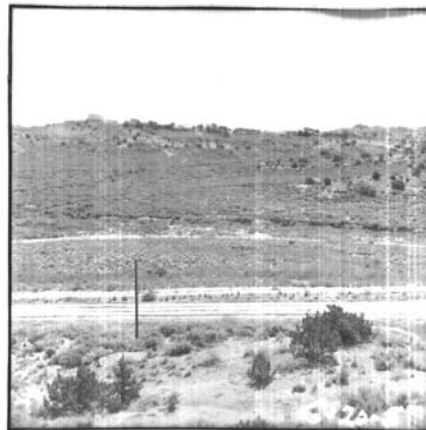
G-20-12 View shows the depression at the openings of the Beacon Mine, Location 83 on the map. The slope bears N. 70° W. and the dump is in the background. The depression is about 8' deep, L-shaped, with one limb 30' in length and the other limb about 50' in length. The photo was taken looking S. 70° E.

No reclamation is needed.

* Reclamation is needed at Location 13a.

H.B.N.

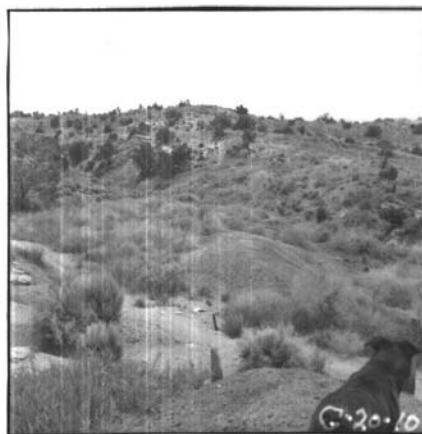
H. B. Nickelson



G-20-2



G-20-8



G-20-10



G-20-11



G-20-12